

A New Narrative for Child Welfare

WHERE WE ARE & WHERE WE MUST GO

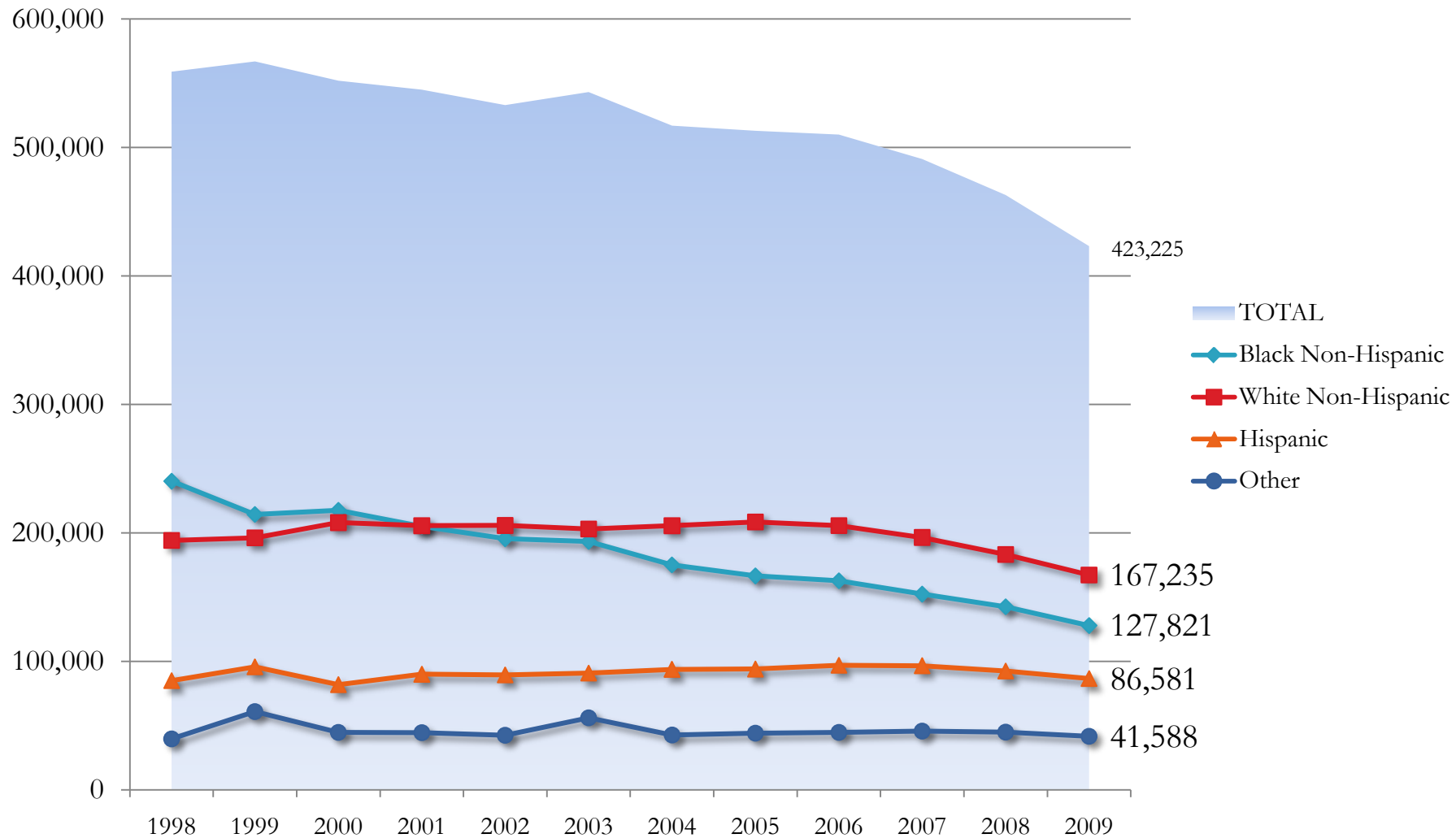
Bryan Samuels, Commissioner

Administration on Children, Youth and Families

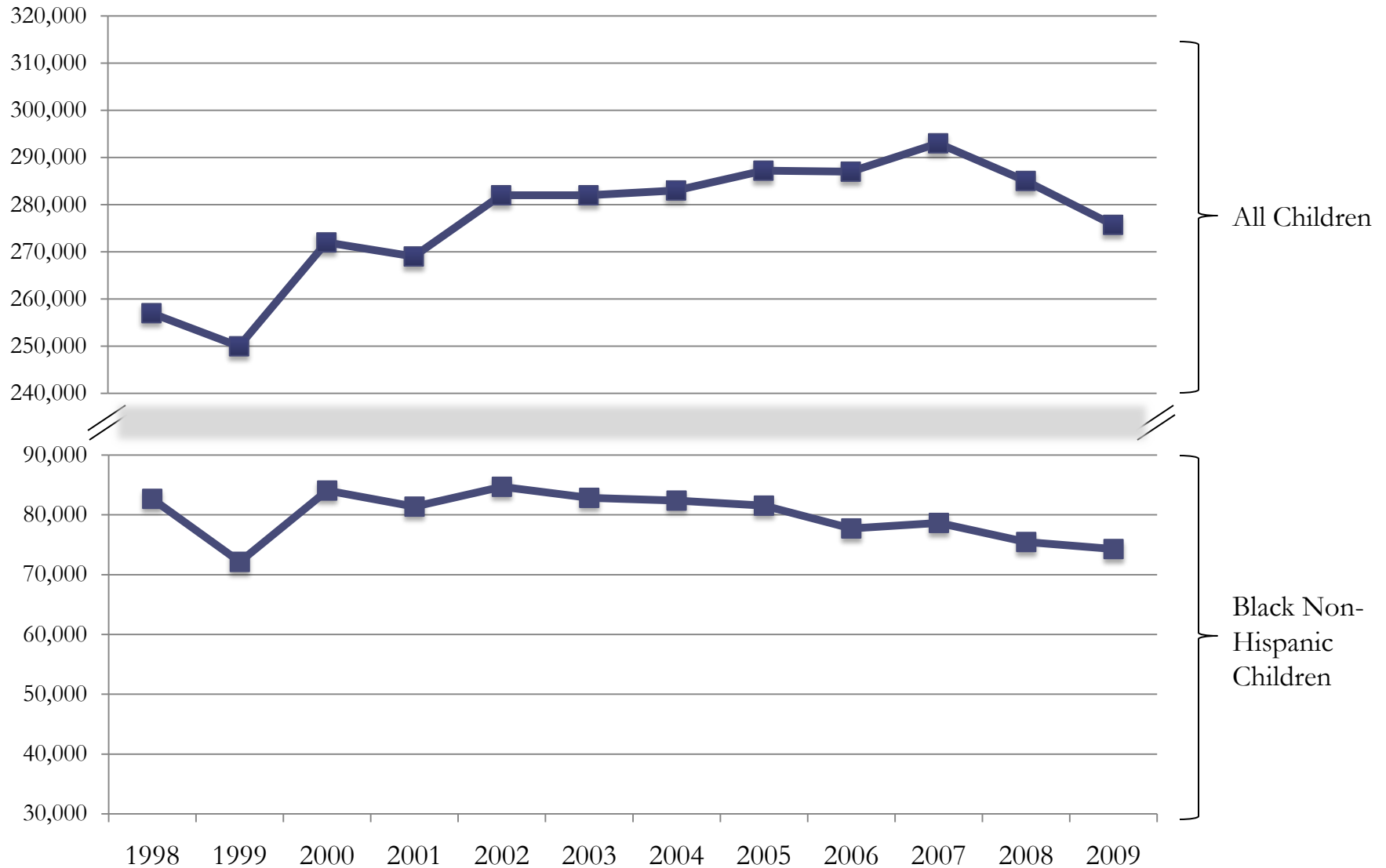
U.S. Department of Health and Human Services
Administration for Children and Families



What happened to the child welfare population in the last decade?

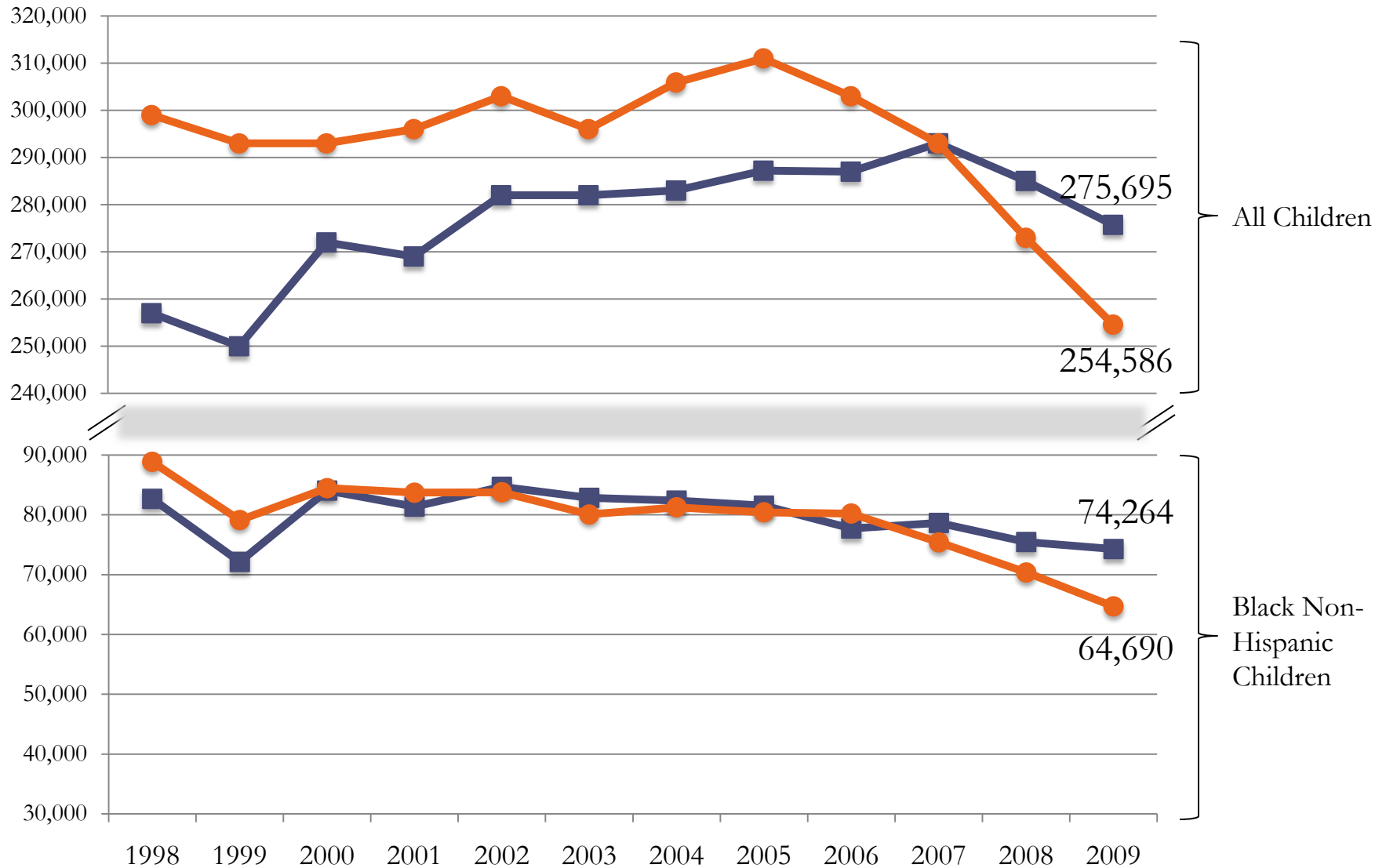


How were reductions in foster care achieved?



Data Source: Adoption and Foster Care Reporting and Analysis System, Reports 10-17 (19998-2009). Children's Bureau, Administration on Children, Youth, and Families (USDHHS, ACF)

How were reductions in foster care achieved?



Data Source: Adoption and Foster Care Reporting and Analysis System, Reports 10-17 (19998-2009). Children's Bureau, Administration on Children, Youth, and Families (USDHHS, ACF)

NSCAW – National Survey of Child and Adolescent Well-being

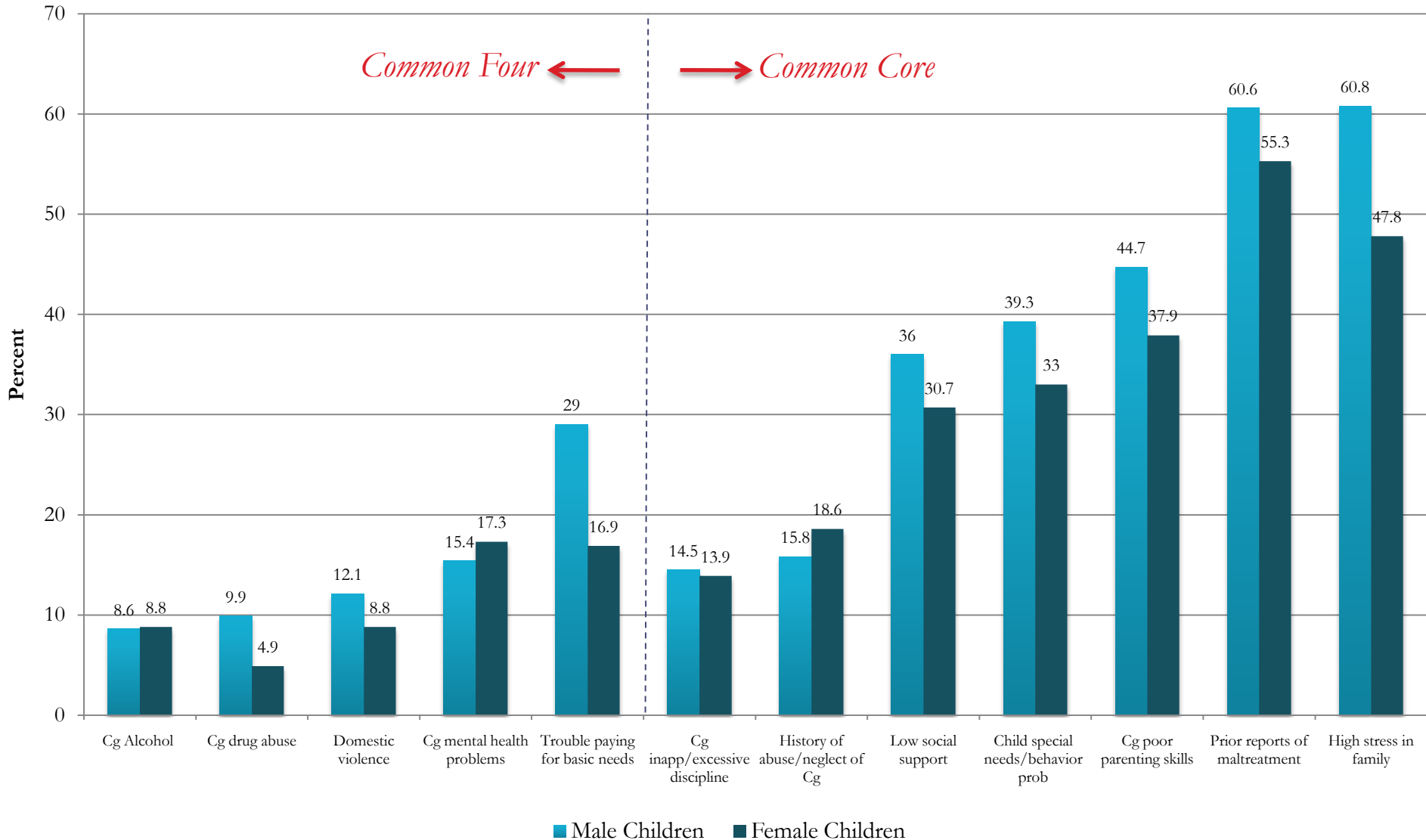
- Nationally representative, longitudinal study of children and families reported to child protective services
- Child-level data
- N = 5,501

WAVE ONE	WAVE TWO	WAVE THREE	WAVE FOUR
• Baseline	• 12 Months	• 18 Months	• 36 Months

RESPONDENTS

- Children
 - Assessments (younger children)
 - Interviews (older children)
- Teachers
 - Survey completed via mail or web
- Current Caregivers
 - Interviews
- Caseworkers
 - Interviews
- Agency Directors
 - Interviews

Typical Focus of Caregiver Interventions



COMMON FOUR

- Domestic Violence
- Substance Abuse
- Mental Health
- Economic Need

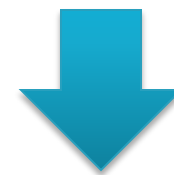


**EVIDENCE BASED
PRACTICES**

**ADAPTATIONS FOR
CULTURE**

COMMON CORE

- High Family Stress Abuse or Neglect
- Low Social Support
- Parenting Skills/Inappropriate or Excessive Discipline
- Prior Maltreatment Reports/Chronic Neglect
- Caregiver History of



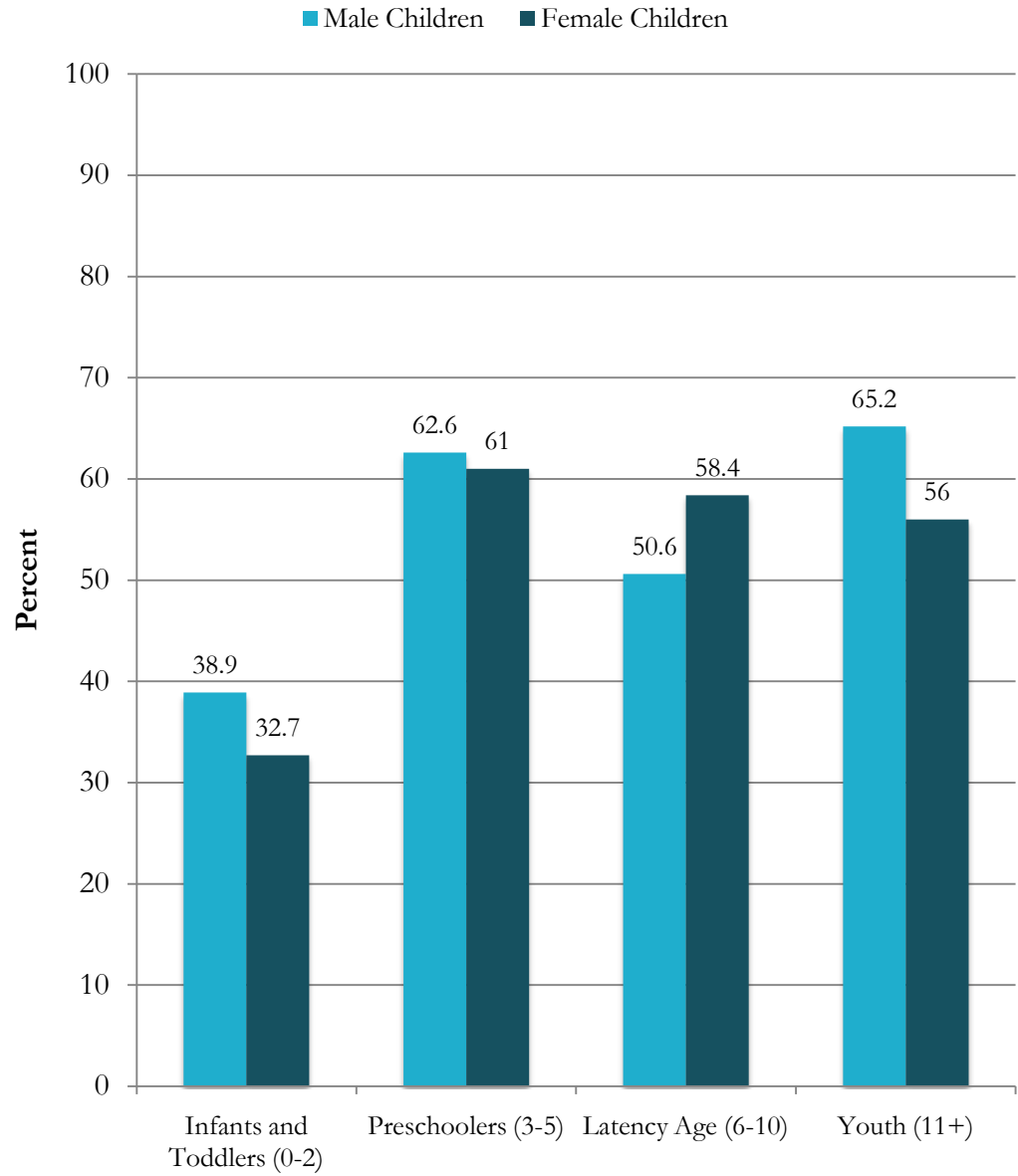
**NEW
WORK**



African American Children: *Previous Reports of Maltreatment*

WHAT ARE THE QUESTIONS?

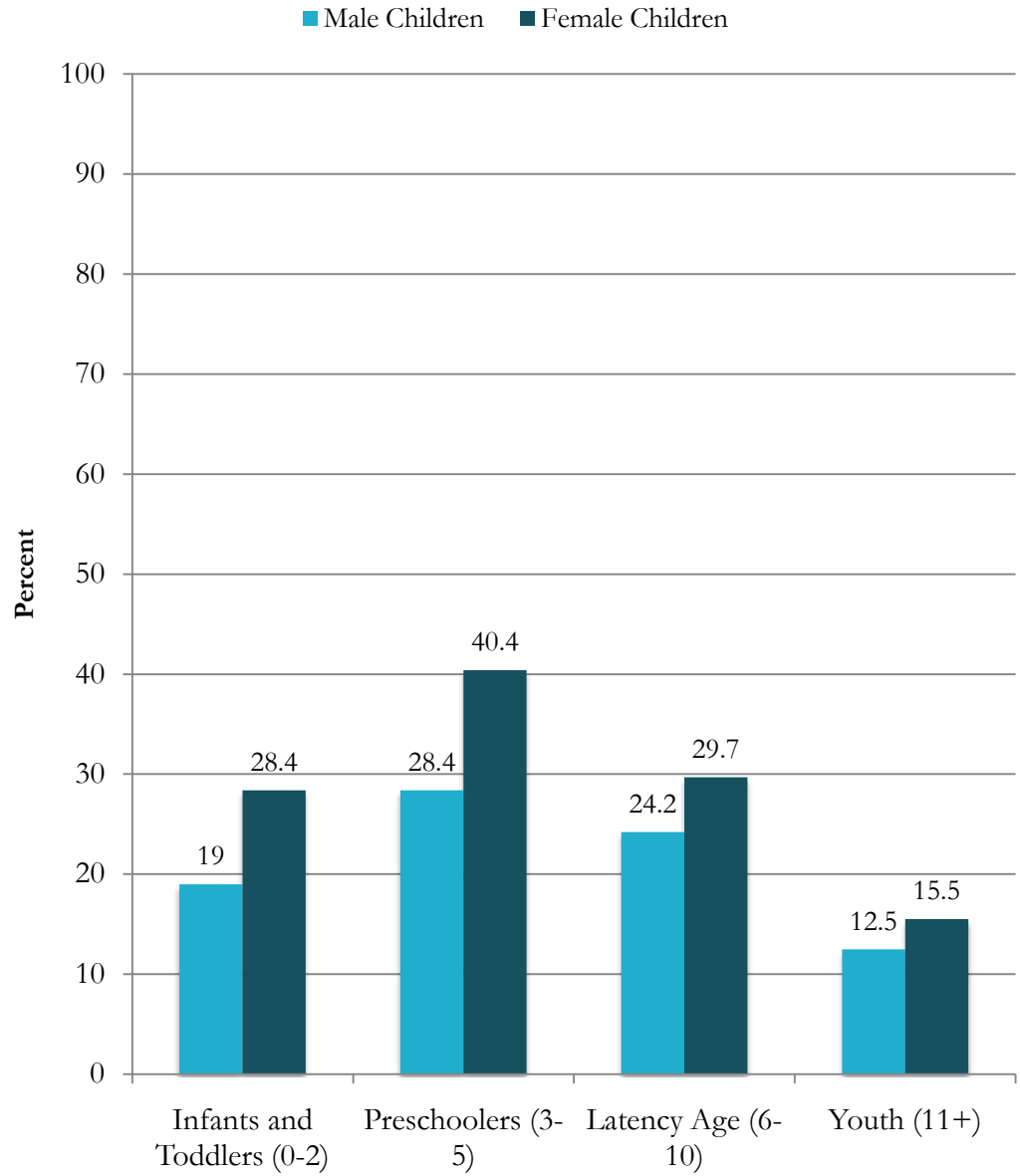
- What should we be looking for? What are the risk and protective factors?
- At what point does the early warning system trigger a response? Or, how many reports are “too many?”
- Which children are most impacted by chronic neglect and chronic interpersonal trauma?



African American Children: *History of Abuse or Neglect of Caregiver*

WHAT ARE THE QUESTIONS?

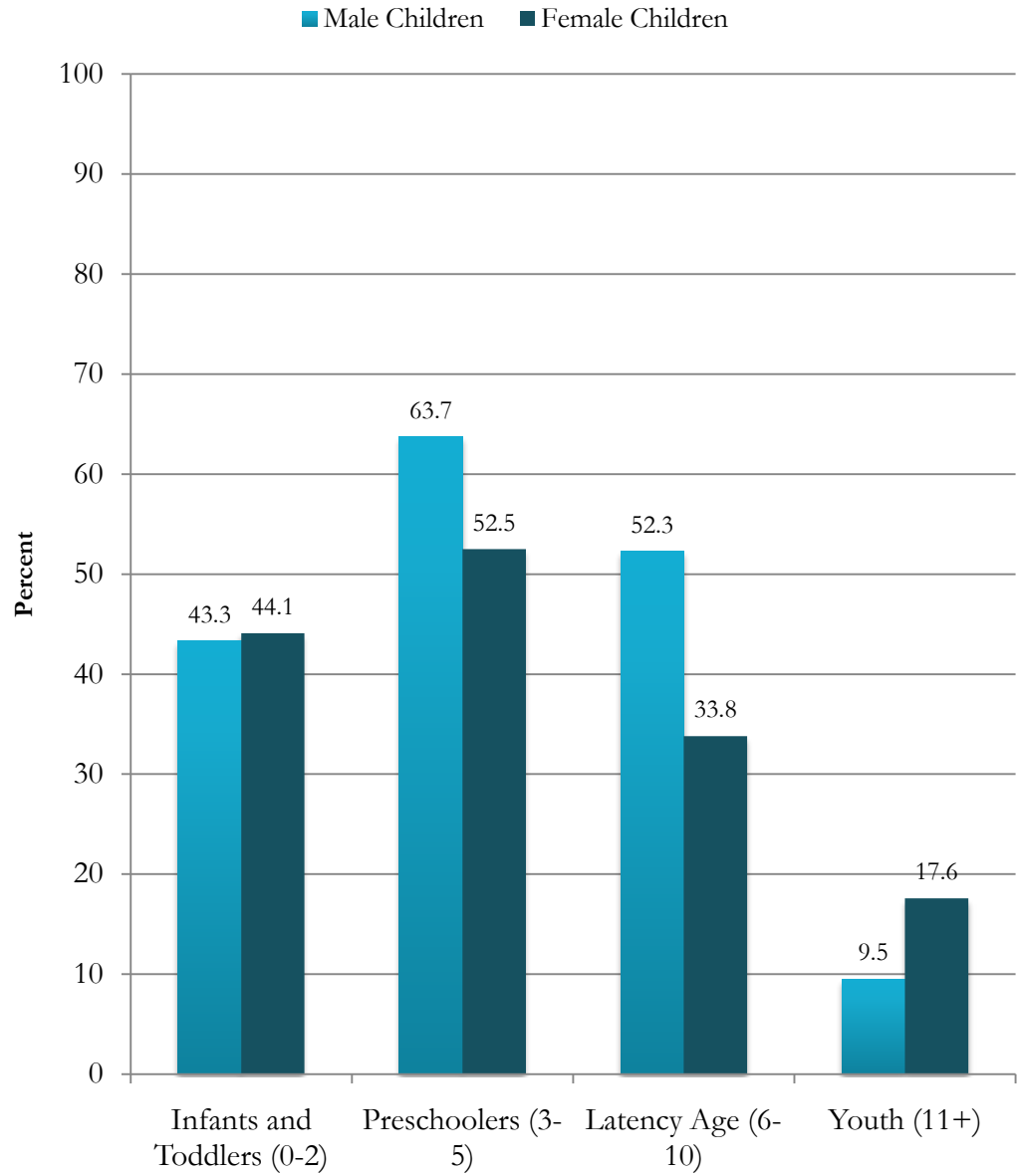
- What impact does a caregiver's history of maltreatment have on parenting? On substance abuse? On stress?
- How and when does one intervene within the context of ongoing parenting?



African American Children: *High Stress in Family*

WHAT ARE THE QUESTIONS?

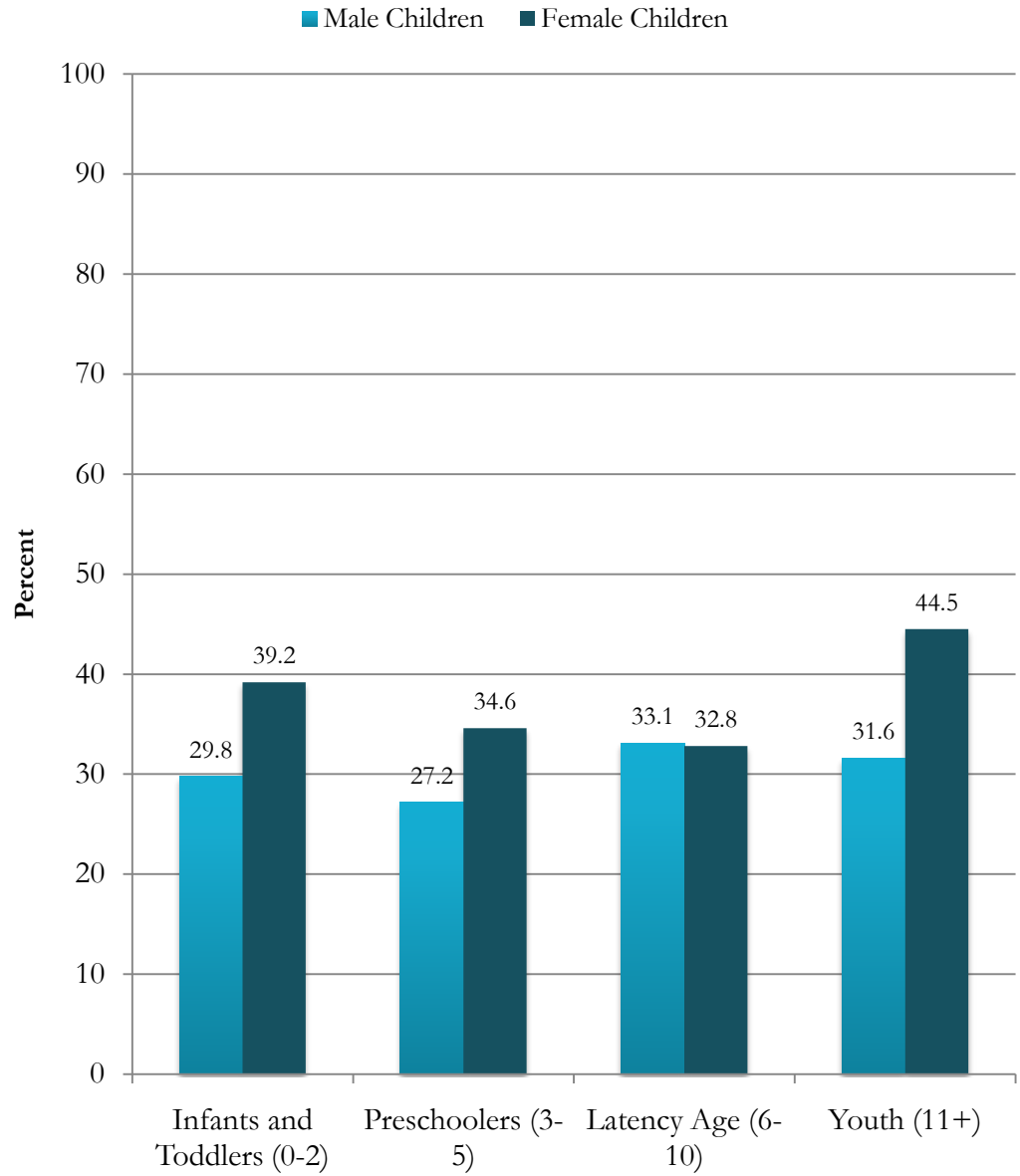
- What role does stress play in maltreatment?
- What role do mental illness, domestic violence, and substance abuse play in stress?
- How does child development impact family stress?



African American Children: Caregivers Have Poor Parenting Skills

WHAT ARE THE QUESTIONS?

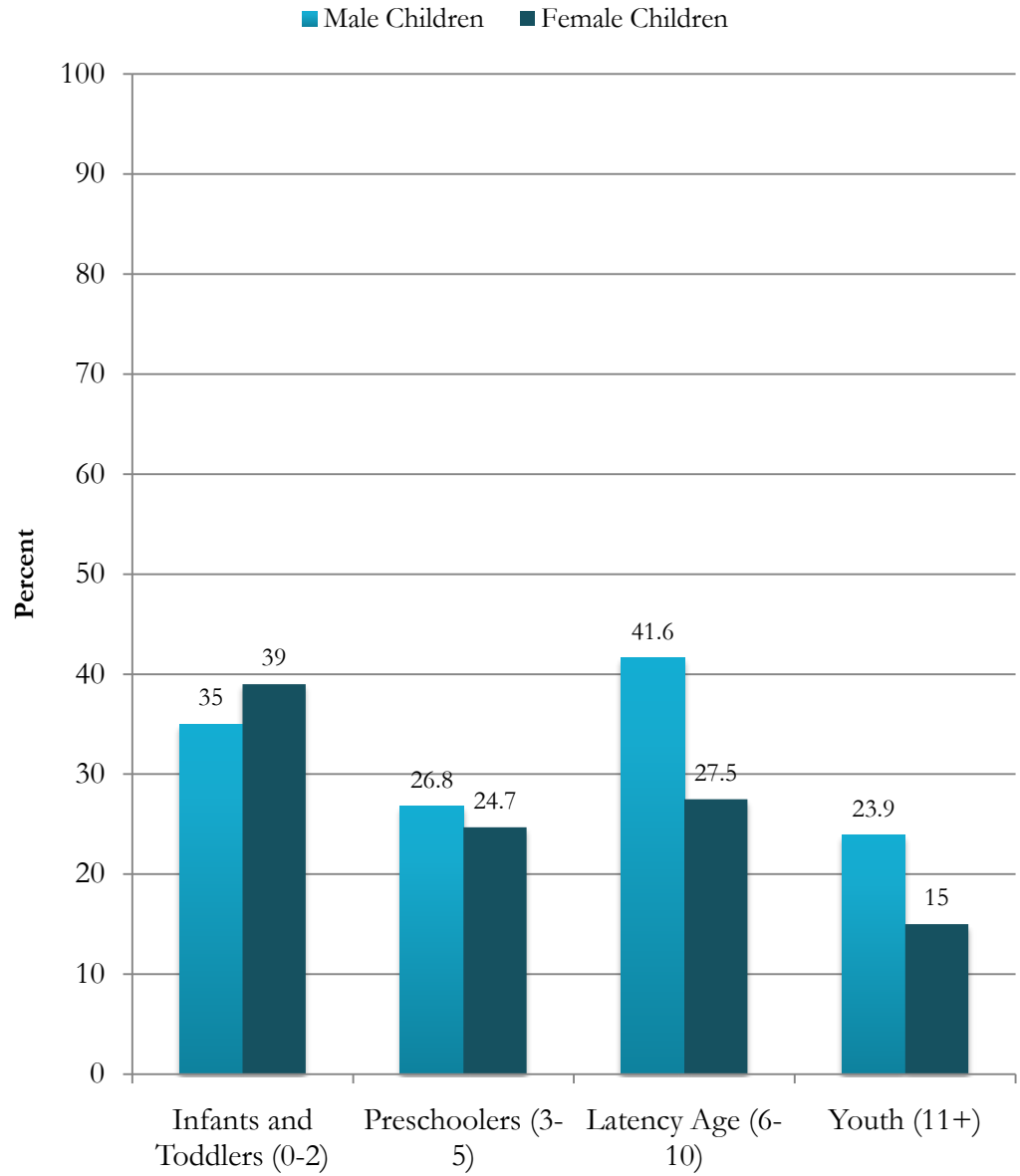
- Which skills are essential to parenting?
- When and how does discipline cross the line?
- Can we intervene to improve parenting or teach appropriate discipline? When is the appropriate time? Who intervenes?



African American Children: Caregivers Have Low Social Support

WHAT ARE THE QUESTIONS?

- How does lack of support impact discipline and abuse?
- What role does culture play in support?
- Where do mental health and substance abuse impact social support systems?
- How does one measure social support?
- How can one intervene to increase social support?



Writing a New Narrative

REQUIRES ASKING KEY QUESTIONS:

- *Where and how does abuse happen within the African American community?*
- *What works and what does not?*
- *What are the gaps? How do we fill them?*

Permanency Innovations Initiative

- Goal: Improve outcomes for children who stay in foster care for long periods of time and reduce the likelihood that they will age out of care
- Year One: \$2.5 Million, planning year
Years 2-5: \$3 Million, implementation years
- Strategies must be informed by relevant research, rigorously evaluated, and inclusive of a range of activities and services to develop, adopt, implement, assess, and sustain effective permanency

SITE	POPULATION
Arizona Department of Economic Security	Native American and African American adolescents
California Department of Social Services	African American youth
Illinois Department of Children and Family Services	Youth 9-12 at risk of long stays in foster care
Los Angeles Gay and Lesbian Community Services Center	LGBTQ youth
University of Kansas Center for Research, Inc.	Children with severe emotional disorders
Washoe County, Nevada, Department of Social Services	Subgroups of youth with greatest barriers to permanence

OLD

NARRATIVE:

A tale of too many children

**NEW
NARRATIVE:**

Ownership

Collective examination

Truth

Following the data

Commitment

Finding answers

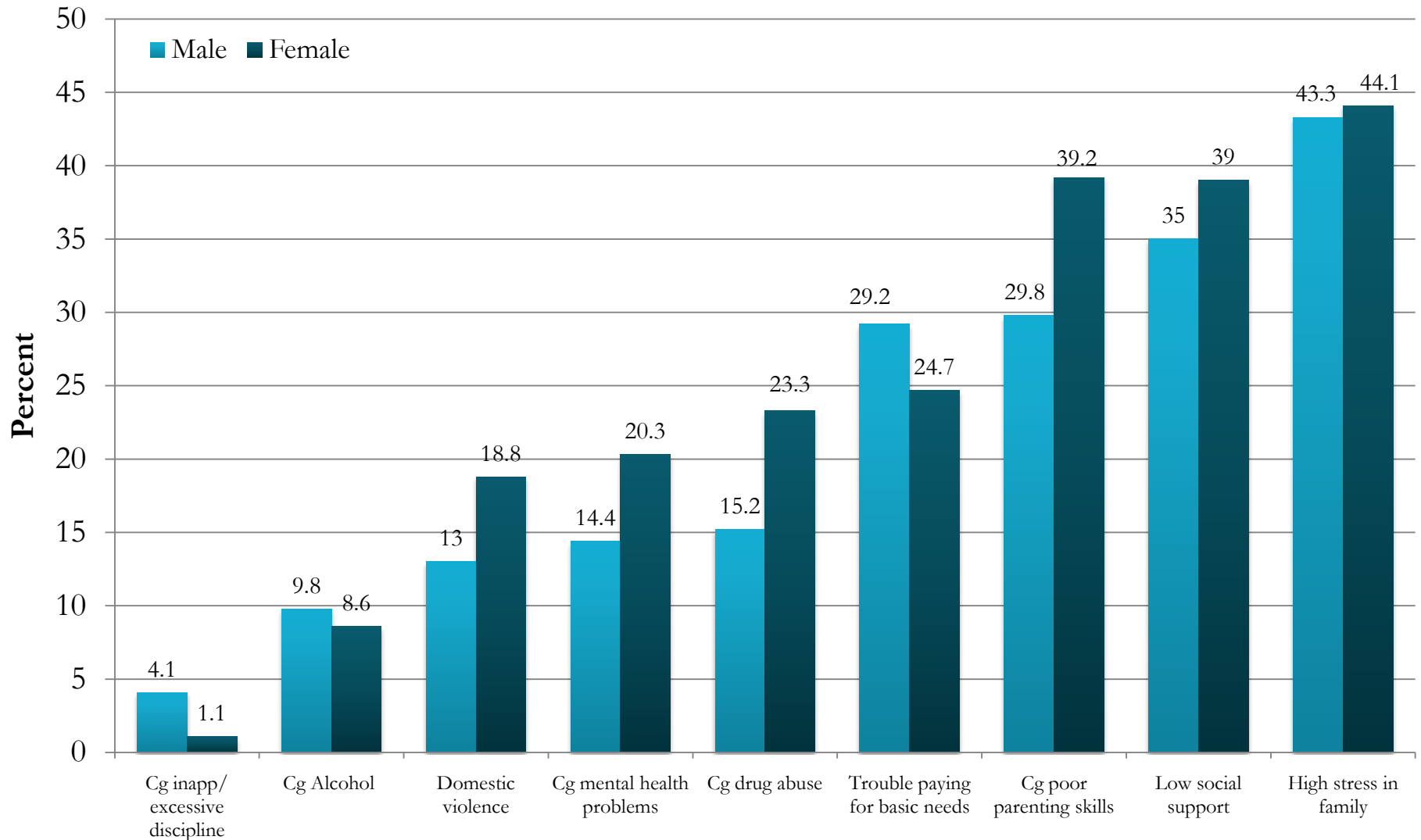
Change

Taking action and getting better outcomes

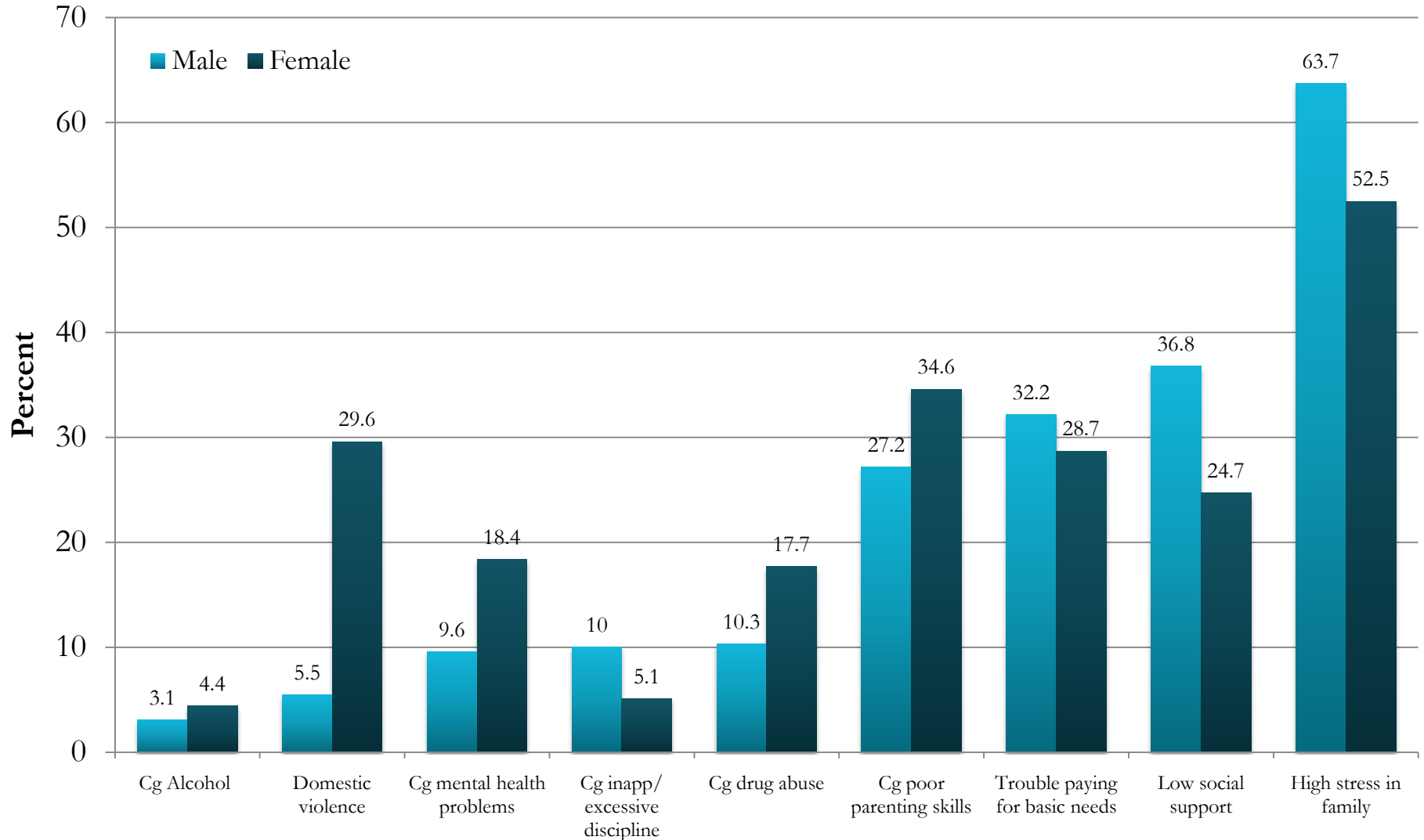
Resilience

Overcoming adversity

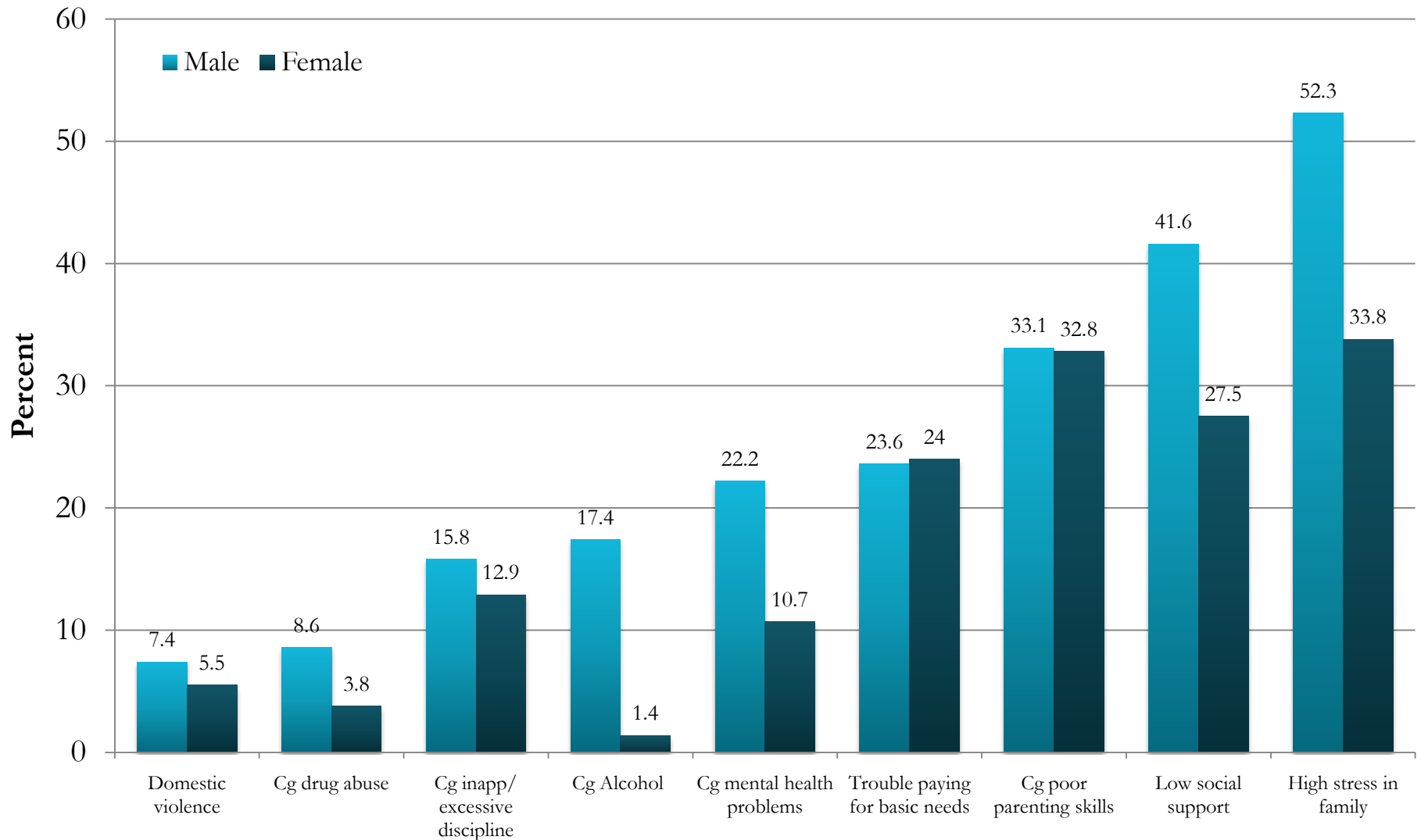
African American Infants (0-2): Caregiver Assessment



African American Pre-Schoolers (3-5): Caregiver Assessment



African American Latency-Aged (6-10): Caregiver Assessment



African American Youth (11+): Caregiver Assessment

